

# Sand Symbols



+



## TECHNICAL SPECIFICATIONS

Collection:	Here Before	Pile Weight:	576g/m <sup>2</sup> (17oz)
Country of Origin:	Australia	Backing:	Action Bac®
Colours:	5 Standard	Installation Method:	Direct Stick Recommended
Yarn:	100% Nylon	Notes:	Dreamtime Flooring is our design collaboration partner and exclusive distributor of the Here Before Collection, which is made by Godfrey Hirst.
Surface Texture:	Patterned Cut Pile	Type:	Commercial Broadloom
Gauge:	39.4/10cm (1/10th Gauge)	Roll Width:	1.96
Total Product Thickness:	7 (+/- 1.0)mm	Pattern Repeat:	1.96m (W) x 2.24m (L)
Pile Height:	4.5 (+/- 1.0)mm		

## PERFORMANCE

Anti-Static:	(AATCC 134) <3.5KV at 21°C & 20% Relative Humidity
Flammability:	Meets the requirements of NCC Spec. C1.10 relating to fire hazard properties for flooring in Class 2-9 buildings~
Colourfast to light:	(ISO 105-B-02-1994) 5-6
Light Reflectance:	Available on Request
Stain Resistance:	Stain Warden®
Biocontaminant Control:	Bioshield® Antimicrobial Control
ACCS Rating:	Contract Extra Heavy Duty - 4 Star
Contract Guarantee:	10 Years available on request*
Recommended Adhesive:	Refer to our GH Commercial Adhesive Guide <a href="http://www.ghcommercial.com">www.ghcommercial.com</a>

## SUSTAINABILITY

PVC Minimisation:	PVC Free
Indoor Air Quality:	Green Building Council compliant for VOC emission rate limits
Product Transparency:	Declare Red List Free, Declare Red List Free
Green Star:	Environmental Certification Scheme (ECS). Level 4 Maximum Points - Certificate
Accreditation:	Manufactured under a quality, environmental and health and safety system certified and complying with ISO 9001, ISO 14001 and ISO 45001 by accredited certification bodies.

Designer  
Jet®

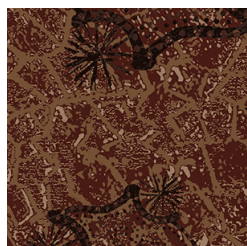


Declare®

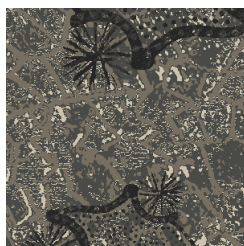
# Sand Symbols



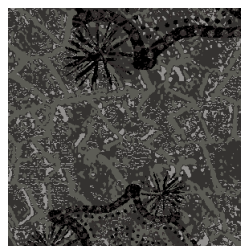
580  
SANDSTONE



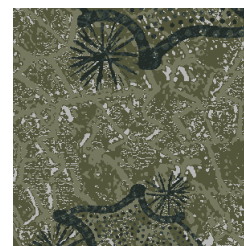
680  
RED EARTH



750  
SEASHELL



780  
DUNE



970  
KELP

Specifications and colourations are subject to manufacturing tolerances. As part of the GH Commercial continuous improvement program, GH Commercial reserves the right to change the specifications of or delete colours of this product without notice. While all care is taken, product images may vary in colour due to possible printing process variations. Images do not seek to duplicate the exact visual appearance, but serve merely as a guide or point of reference.

All GH Commercial carpets must be installed in accordance with the latest AS2455 and any relevant GH Commercial Carpet Installation Instructions.\*This guarantee is in addition to any rights consumers may have under Australian consumer laws. Terms and conditions apply - for full information in respect to the scope of the guarantee, please contact your GH Commercial Account Manager or our Head Office.