

TECHNICAL SPECIFICATIONS

Collection:	Here Before	Backing:	Enviro Bac®
Country of Origin:	Australia	Carpet Tiles & Planks Size:	250mm x 1000mm
Colours:	5 Standard	Installation Method:	Direct Stick or FlexLok® (adhesive free installation) recommended (Ashlar, Herringbone or Basket Weave)
Yarn:	100% Nylon	Notes:	Dreamtime Flooring is our design collaboration partner and exclusive distributor of the Here Before Collection, which is made by Godfrey Hirst.
Surface Texture:	Patterned Cut Pile	Type:	Carpet Tiles and Planks
Gauge:	39.4/10cm (1/10th Gauge)	Units Per Box:	16
Total Product Thickness:	7 (+/- 1.0)mm	m ² per box:	4
Pile Height:	4.5 (+/- 1.0)mm	m ² per pallet:	144
Pile Weight:	576g/m ² (17oz)		

PERFORMANCE

Anti-Static:	(AATCC 134) <3.5KV at 21°C & 20% Relative Humidity
Flammability:	Meets the requirements of NCC Spec. C1.10 relating to fire hazard properties for Class 2-9 buildings~
Light Reflectance:	Available on Request
Stain Resistance:	Stain Warden®
Biocontaminant Control:	Bioshield® Antimicrobial Control
ACCS Rating:	Contract Extra Heavy Duty - 4 Star
Contract Guarantee:	15 Years Available on Request*
Recommended Adhesive:	Refer to our GH Commercial Adhesive Guide www.ghcommercial.com

SUSTAINABILITY

PVC Minimisation:	PVC Free
Indoor Air Quality:	Green Building Council Compliant for VOC emission rate limits
Product Transparency:	Declare Red List Free, Declare Red List Free
Green Star:	Environmental Certification Scheme (ECS). Level 4 Maximum Points - Certificate #13086
Accreditation:	Manufactured under a quality, environmental and health and safety system certified and complying with ISO 9001, ISO 14001 and ISO 45001 by accredited certification bodies.

AVAILABILITY

Backing Options:	Enviro Bac Plus® cushion backing, Enviro Bac Lite®
------------------	--

Designer
Jet®



Green Building
Council Australia
Member



Sacred Stories



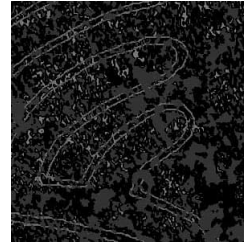
390
BASALT



680
MOONSTONE



760
SMOKEY QUARTZ



790
OPAL



970
EMERALD

Specifications and colourations are subject to manufacturing tolerances. As part of the GH Commercial continuous improvement program, GH Commercial reserves the right to change the specifications of or delete colours of this product without notice. While all care is taken, product images may vary in colour due to possible printing process variations. Images do not seek to duplicate the exact visual appearance, but serve merely as a guide or point of reference.

All GH Commercial carpet tiles and planks must be installed in accordance with AS2455 Parts 1 & 2 (latest version) and the GH Commercial Carpet Tile/Plank Installation Instructions.

Chair pads are recommended under office chairs with roller castors to preserve appearance retention, act as a deterrent toward delamination and to prevent premature or accelerated wear. Walk-off tiles from the Tuff Stuff II Collection are recommended at entryways to reduce soiling.

~Test results and certificates are available on request.

*Warranty is in addition to any rights consumers may have under Australian consumer laws. Terms and conditions apply - for full information in respect to the scope of the warranty please contact your GH Commercial Account Manager or our Head Office.