



**DREAMTIME
FLOORING**
100% Indigenous Owned



HERE BEFORE COLLECTION

Pattern Perfect™
Carpet Planks

Designer Jet®
Carpet Planks

Designer Jet®
1.96m Wide Sheet

Proudly manufactured by

Godfrey Hirst



DREAMTIME
FLOORING

+

Godfrey Hirst



Above: Inspirational art by Aunty Sam Walker-Wilson

Left: Coastal Guardians 190 Echo

Contents

Here Before Collection Story	4
Supporting Generational Change	6
Artist Biography: Aunty Sam Walker-Wilson	7
Setting the industry standard through a unique partnership	8
Under The Scars	10
Pattern Perfect™ Technology	12
Cracked Earth	14
Earths Canvas	16
Stories Of Time	18
Designer Jet® Technology	20
Sacred Stories	22
Against The Tide	24
Above Water	26
Sand Symbols	28
Coastal Guardians	30
Specification	32



Here Before Collection Story



For generations Indigenous Australians have shared their culture through their stories and artwork. Aunty Sam Walker-Wilson, a respected elder living on Gunai Kurnai Country, is a proud Yorta Yorta woman who has been telling her stories through her hand crafted and painted pottery journey for over two decades.

Clay has been used by traditional custodians of Australia for its ceremonial use in painting, on bark, wood and rock faces, and body painting.

Follow us on a cultural journey as Aunty Sam shares the stories of her ancestors here before.

Here Before is a collaboration between Dreamtime Flooring and Godfrey Hirst, representing stories told through artist Aunty Sam from BNYM Indigenous Designs. The rich textures and detailing in Aunty Sam's creations can be felt in this carpet range connecting us to country while creating culturally safe places.





Supporting Generational Change

For every square metre sold of the Here Before Collection, Dreamtime Flooring and Godfrey Hirst will donate \$1 each to a charitable Indigenous organisation annually during NAIDOC week. Together, assessing where the need lies most within our communities.



Dreamtime Flooring and GH Commercial have made contributions to local First Nations communities, through donating to On-Country Pathways, an Indigenous owned and operated not-for-profit organisation. Dreamtime Flooring donated to On-Country Pathways in 2022 and 2023, and GH Commercial donated to On-Country Pathways in 2023.

On-Country Pathways are committed to closing the gap between Indigenous and non-Indigenous employment rates, traineeships, job placement support, cadetships and a driver-mentor program for First Nations people aged 15-24.



Our dream is to make lasting generational change for our Indigenous families and communities.

Aunty Sam



I am a founding member of BNYM and have been making and painting pots for over 25 years. My totem is a long necked turtle; that's how I connect to country, and I often paint them on my pieces. When I'm not working on the BNYM range, I teach an introduction to small business class, ceramic design skills and pottery classes.

When I get the time, I love hand-building big sculptural pieces in contemporary and indigenous designs. They are my labours of love and can take hundreds of hours to make. It's hard to let them go but I do sell those pieces.



Aunty Sam Walker-Wilson of BNYM Indigenous Designs with Josh Haddock and the Honourable Matt Thistlewaite, Assistant Minister for Defence, Veterans Affairs and for the Republic.

ARTIST BIOGRAPHY

Setting the industry standard through a unique partnership

GH Commercial and Dreamtime Flooring have come together to create a partnership that is a first of its kind and distinctive within the Oceanic region. Together, bringing First Nations artists work to life in a distinctive alliance unlike any other.

Dreamtime Flooring is a 100% Indigenous owned flooring business that aims to provide the missing link connecting culture, artwork and flooring.

Josh Haddock, Managing Director of Dreamtime Flooring is a proud Yorta Yorta man raised in Morwell, Victoria on Gunai Kurnai Country, Josh wanted to create a business that celebrated Indigenous culture through flooring while engaging with other Indigenous owned businesses,

helping to streamline income back into Indigenous communities.

With over 150 years manufacturing experience, we wanted to take our learnings as a business and share our knowledge across manufacturing, sales and our wider business with Josh, and his team of flooring experts, to help further Dreamtime Flooring's success.

This partnership model empowers Dreamtime Flooring to be our design collaboration partner and exclusive distributor of the Here Before Collection, fostering growth for an 100% Indigenous owned business, creating a unique model that is unlike any other within the industry.



“This partnership represents the evolution of GH Commercial. A shift from mere business strategies to heartfelt responsibility. For me, it’s a hope that this step forward ripples across the corporate world, awakening others to the richness of First Nations cultures and appropriate engagement.”



Joshua Haddock, Managing Director of Dreamtime Flooring.



DREAMTIME
FLOORING

+

Godfrey Hirst

Pattern Perfect™
Carpet Planks



Under The Scars

EARTHS CANVAS
535 JADE

Pattern Perfect™ Technology

With a strong commitment to innovation and technology, we actively invest in the latest manufacturing technology to enhance customer experience and deliver the very best flooring solution.

Our Pattern Perfect™ technology features greater pattern and colour placement, multiple pile height, pinpoint stitch accuracy and custom tile and plank capability.



Flexibility

Pattern Perfect™ offers ultimate design freedom, with large scale designs for public spaces to intricate details to blend patterns across different configurations. Let Pattern Perfect™ create unique carpet tiles and planks for your project.



Made in Australia

Our Pattern Perfect™ carpet tile products are designed and manufactured in Australia and come with knowledgeable, local service.



Sustainability

As part of our commitment to product transparency, all Pattern Perfect™ carpet tiles and planks are Declare Red List Free and qualify for takeback at the end of life under our GH Commercial ReCover Program.



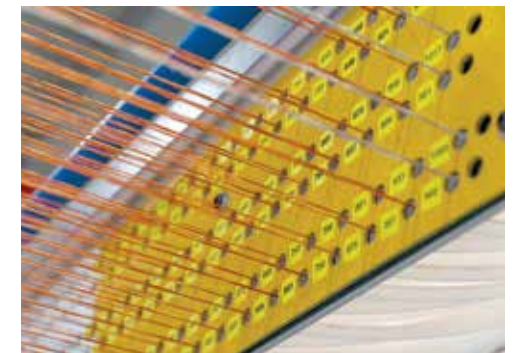
Performance & Durability

Pattern Perfect™ carpet tiles are independently rated contract heavy or extra heavy duty under the stringent performance guidelines of the Carpet Institute of Australia's, Australian Carpet Classification Scheme.



Bespoke Capability

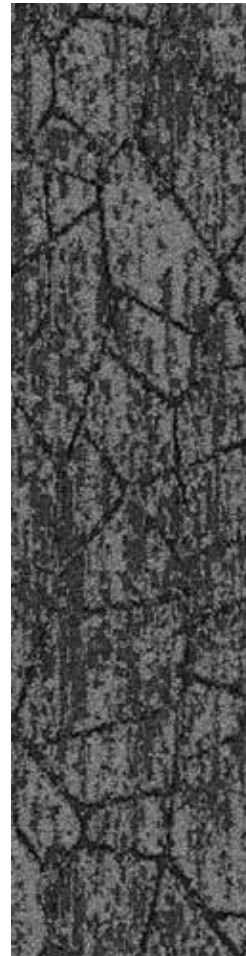
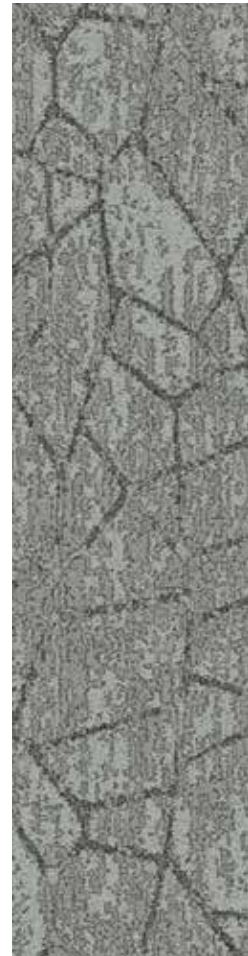
Pattern Perfect™ carpet tiles and planks can be customised to suit your unique project needs. Choose up to 4 colours per designs from our large yarn colour bank.



Under The Scars

Cracked Earth

Cracked Earth signifies the land acting as a guide for Indigenous people and sharing its wisdom through the scars in the earth left behind.



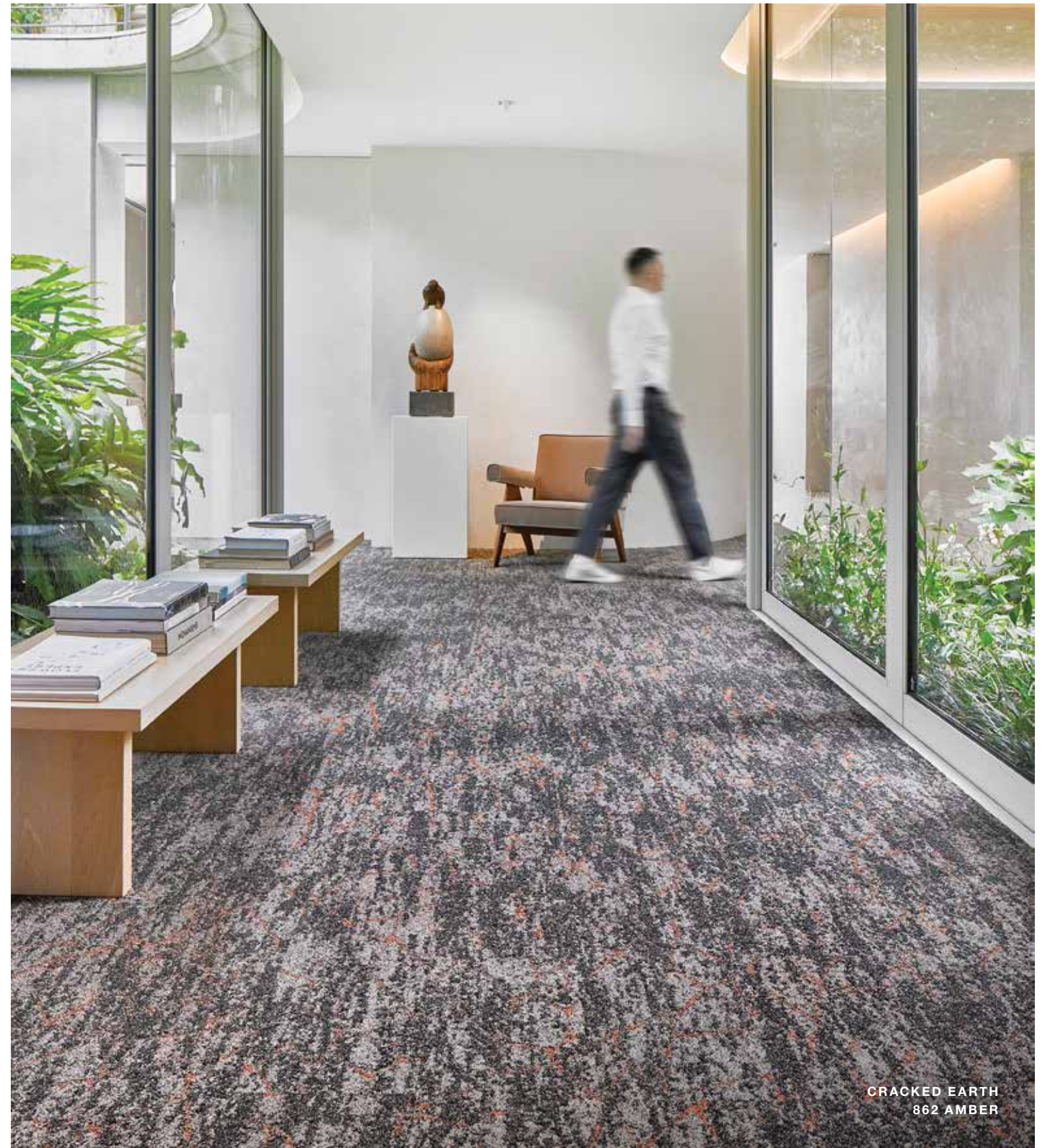
535 JADE

829 JASPER

862 AMBER

938 MARBLE

989 GRANITE



CRACKED EARTH
862 AMBER



EARTHS CANVAS
535 JADE

Under The Scars

Earths Canvas

Earths Canvas explores how the “scars” of the earth holds memories of the seasons and how Indigenous people would use the earth to teach them the cycling of the seasons.



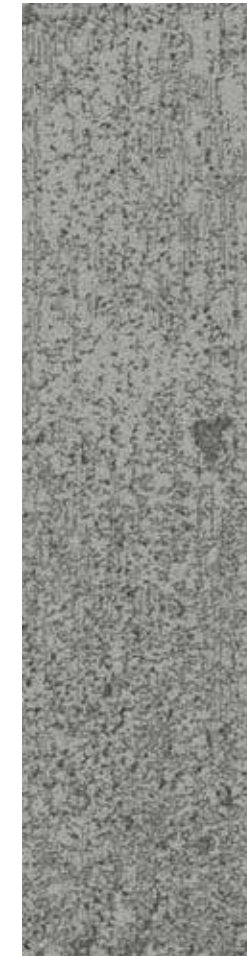
535 JADE



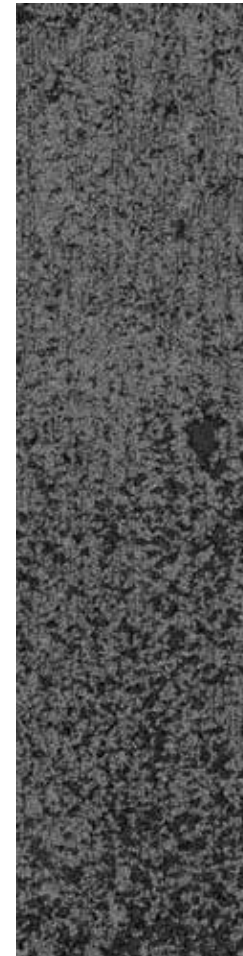
829 JASPER



862 AMBER



938 MARBLE



989 GRANITE

 **DREAMTIME**
FLOORING

+

Godfrey Hirst

Designer Jet®
Carpet Planks



Stories Of Time

AGAINST THE TIDE
550 REEF

Designer Jet[®] Technology

The first in the southern hemisphere, Designer Jet[®] is a world class custom carpet technology for creating an infinite array of colours and bespoke designs you would never have thought possible in a carpet.

At the forefront of custom carpet creation, Designer Jet[®] works by taking any striking pattern, drawing or image and using precision engineering to inject the dye into the carpet, offering a flexible, creative and performance driven solution for your next project.



Available in a multitude of formats and texture levels, Designer Jet[®] is perfect for projects of any size of budget.



Flexibility

Designer Jet[®] gives you the freedom to select your surface texture (velvet cut pile or textured loop), product size (tiles, planks or sheet) and backing type depending on project requirements.



Made in Australia

Our Designer Jet[®] products are designed and manufactured in Australia and come with knowledgeable, local service.



Performance & Durability

All Designer Jet[®] carpets are independently rated contract heavy or extra heavy duty under the stringent performance guidelines of the Carpet Institute of Australia's, Australian Carpet Classification Scheme.



Sustainability

As part of our commitment to product transparency, all Designer Jet[®] carpet tiles and planks are Declare Red List Free. The Designer Jet[®] process uses less water, chemicals and dyes than other carpet production methods and these products qualify for takeback at the end of life under our GH Commercial ReCover Program.



Bespoke Capability

With virtually limitless colour and design capability, let us make a carpet as unique as your project's interior.



Cost Effective

With zero design fees, smaller minimum orders and a price to suit any budget, Designer Jet[®] makes bespoke carpet a reality for any commercial interior.



Fast Turnaround

Our in-house design team can help create your vision and the carpet can be produced in as little as 3 weeks from order*.

*From order date. This is the anticipated supply time, however variations may occur due to seasonal delays and for large or complex projects.

Stories Of Time

Sacred Stories

This design depicts traditional line work found in ancestral caves and paints.



390 BASALT

790 OPAL

680 MOONSTONE

970 EMERALD

760 SMOKEY QUARTZ



SACRED STORIES
970 EMERALD

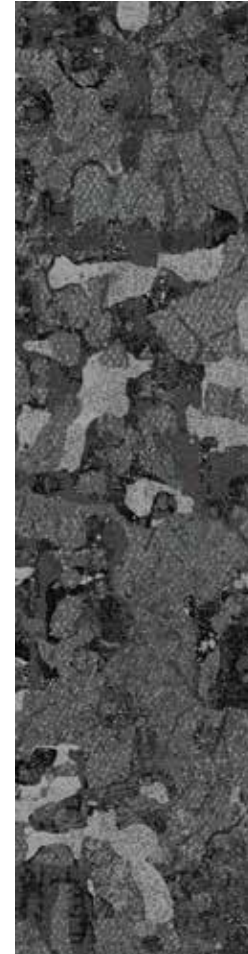


AGAINST THE TIDE
550 REEF

Stories Of Time

Against The Tide

This design portrays the ocean crashing against the rocks, shaping our coastline, telling its own story and nature's history.



780 SEABED



380 SEAGRASS



550 REEF



750 OCEAN



530 CORAL

 **DREAMTIME**
FLOORING

+

Godfrey Hirst

Designer Jet®
1.96m Wide Sheet



Above Water

COASTAL GUARDIANS
190 ECHO

Above Water

Sand Symbols

This design represents sand symbols used by First Nations Australians for mapping of country with lines and symbols drawn in the sand.



580 SANDSTONE



780 DUNE



970 KELP



750 SEASHELL



680 RED EARTH



SAND SYMBOLS
750 SEASHELL

Artwork pictured on wall created by artist, Tanya Bird.



COASTAL GUARDIANS
190 ECHO

Above Water

Coastal Guardians

This design symbolises the importance of a balanced life and the special connection to the animals and the ocean providing a sense of fulfilment.



980 SPLASHER



890 BOTTLENOSE



590 DUSKY



190 ECHO



790 FLIPPER

SPECIFICATION



CRACKED EARTH
862 AMBER

Dreamtime Flooring is 100% Indigenous Owned & a proud Platinum Kinaway Corporate Partner / Deadly Black member.



Declare.



Manufactured under a quality, health and safety, and environmental system certified and complying with ISO 9001, ISO 45001 and ISO 14001 by accredited certification bodies.

All GH Commercial carpets must be installed in accordance with the relevant Australian and/or New Zealand applicable standards (latest AS2455) and the GH Commercial Installation Instructions. Chair pads are recommended under office chairs with roller castors to preserve appearance retention, act as a deterrent toward delamination and to prevent premature or accelerated wear. Walk-off tiles from the Tuff Stuff II Collection are recommended at entryways to reduce soiling. Specifications and colourations are subject to manufacturing tolerances. As part of the GH Commercial continuous improvement program, specifications may be changed or colours deleted without notice. For current and complete specifications please visit ghcommercial.com. Images do not seek to duplicate the exact visual appearance, but serve merely as a guide or point of reference. While all care is taken, product images may vary in colour due to possible printing process and/or light variations. *Test results and certificates are available on request. †Minimum order quantities may apply. Contact your GH Commercial Account Manager for information. ‡This guarantee/warranty is in addition to any rights consumers may have under Australian and/or New Zealand consumer laws. †Terms and conditions apply - for full information in respect to the scope of the guarantee please contact your GH Commercial Account Manager or our Head Office.

94013 - 0424

Cracked Earth & Earths Canvas

Product Type	Pattern Perfect™ Carpet Planks
Country of Origin	Australia
Description	Textured Patterned Loop Pile Carpet Plank
Colours	Earths Canvas - 5 Standard Cracked Earth - 5 Standard Custom colours available from 200m ²
Yarn	100% Statron Plus® Solution Dyed Nylon
Gauge	47.2/10cm (1/12th Gauge)
Pile Height	5mm (+/-1mm)
Product Thickness	7.5mm (+/-1mm)
Pile Weight	745g/m ² (22oz)
Product Size	250mm x 1000mm
Backing Structure	Enviro Bac®

Available Options† 500mm x 500mm Tile, Enviro Bac Plus® or Lite® (Cushion Backed)

Installation Method Direct Stick or FlexLok® tabs (adhesive free installation) recommended (Ashlar, Herringbone, Basket Weave)

Performance

Anti-static	AATCC 134 < 3.5kV at 21°C & 20% Relative Humidity
Flammability~	Meets the requirements of the NCC Spec. C1.10 relating to fire hazard properties for flooring in class 2-9 buildings (including health and aged care buildings). Meets the requirements of the New Zealand Buildings Code Section C3 - Fire Affecting Areas Beyond the Fire Source.
Colourfast to Light	5 - 6 (Designer Jet® Roll & Planks) 6 - 7 (Pattern Perfect™ Carpet Planks)
Light Reflectance Values	Available on request
Stain Treatment	Stain Warden®
Biocontaminant Control	Bioshield® Antimicrobial Control
ACCS Rating~	See website for more details
Australian Guarantee*	15 Years available upon request^ (Pattern Perfect™ Carpet Planks & Designer Jet® Planks) 10 Years available upon request^ (Designer Jet® Sheet)
New Zealand Warranty*	Comprehensive warranties are available on request and will be issued on a project by project basis.

Sacred Stories & Against The Tide

Product Type	Designer Jet® Carpet Planks
Country of Origin	Australia
Description	Patterned Cut Pile
Colours	Sacred Stories - 5 Standard Against the Tide - 5 Standard Custom colours available from 20m ²
Yarn	100% Nylon
Gauge	39.4/10cm (1/10th Gauge)
Pile Height	4.5mm (+/-1mm)
Product Thickness	7mm (+/-1mm)
Pile Weight	576g/m ² (17oz)
Product Size	250mm x 1000mm
Backing Structure	Enviro Bac®

Available Options† 500mm x 500mm Tile, Enviro Bac Plus® or Lite® (Cushion Backed), Textured Loop Pile, Colour and Design Customisation

Installation Method Direct Stick or FlexLok® tabs (adhesive free installation) recommended (Ashlar, Herringbone, Basket Weave)

Sustainability

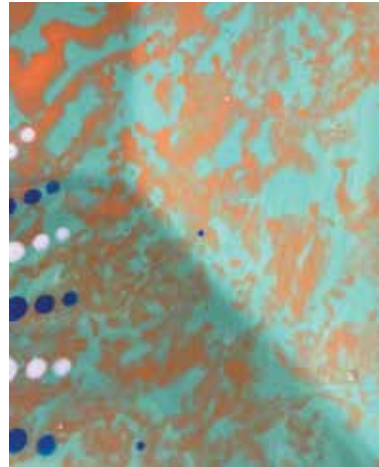
PVC Minimisation	PVC Free
Indoor Air Quality~	Green Building Council Compliant for VOC Emission Rate Limits
Product Stewardship	This product qualifies for takeback at the end of life under the GH Commercial ReCover Recycling Program.
Product Transparency	Declare® LBC Red List Free
Green Star	Environmental Certification Scheme (ECS). See website for more details
Accreditation	Manufactured under a quality, health and safety, and environmental system certified and complying with ISO 9001, ISO 45001 and ISO 14001 by accredited certification bodies.

For all sales enquiries, please visit www.dreamtimeflooring.com



Left: *Against the Tide*
550 Reef

Below: Art by Aunty Sam Walker-Wilson



Above: *Cracked Earth 862 Amber*

Right: Art by Aunty Sam Walker-Wilson

