

Against The Tide



+



TECHNICAL SPECIFICATIONS

| | | | |
|--------------------------|----------------------------|-----------------------------|---|
| Collection: | Here Before | Backing: | Enviro Bac® |
| Country of Origin: | Australia | Carpet Tiles & Planks Size: | 250mm x 1000mm |
| Colours: | 5 Standard | Installation Method: | Direct Stick or FlexLok® (adhesive free installation) recommended (Ashlar, Herringbone or Basket Weave) |
| Yarn: | 100% Nylon | Notes: | Dreamtime Flooring is our design collaboration partner and exclusive distributor of the Here Before Collection, which is made by Godfrey Hirst. |
| Surface Texture: | Patterned Cut Pile | Type: | Carpet Tiles and Planks |
| Gauge: | 39.4/10cm (1/10th Gauge) | Units Per Box: | 16 |
| Total Product Thickness: | 7 (+/- 1.0)mm | m ² per box: | 4 |
| Pile Height: | 4.5 (+/- 1.0)mm | m ² per pallet: | 144 |
| Pile Weight: | 576g/m ² (17oz) | | |

PERFORMANCE

| | |
|-------------------------|--|
| Anti-Static: | (AATCC 134) <3.5KV at 21°C & 20% Relative Humidity |
| Flammability: | Meets the requirements of NCC Spec. C1.10 relating to fire hazard properties for Class 2-9 buildings~ |
| Light Reflectance: | Available on Request |
| Stain Resistance: | Stain Warden® |
| Biocontaminant Control: | Bioshield® Antimicrobial Control |
| ACCS Rating: | Contract Extra Heavy Duty - 4 Star |
| Contract Guarantee: | 15 Years Available on Request* |
| Recommended Adhesive: | Refer to our GH Commercial Adhesive Guide www.ghcommercial.com |

SUSTAINABILITY

| | |
|-----------------------|---|
| PVC Minimisation: | PVC Free |
| Indoor Air Quality: | Green Building Council Compliant for VOC emission rate limits |
| Product Transparency: | Declare Red List Free, Declare Red List Free |
| Green Star: | Environmental Certification Scheme (ECS). Level 4 Maximum Points - Certificate #13086 |
| Accreditation: | Manufactured under a quality, environmental and health and safety system certified and complying with ISO 9001, ISO 14001 and ISO 45001 by accredited certification bodies. |

AVAILABILITY

| | |
|------------------|--|
| Backing Options: | Enviro Bac Plus® cushion backing, Enviro Bac Lite® |
|------------------|--|

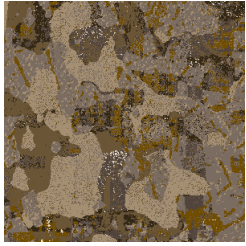
Designer
Jet®



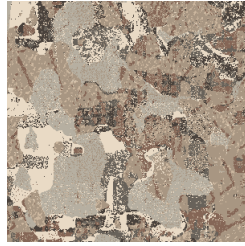
Green Building
Council Australia
Member



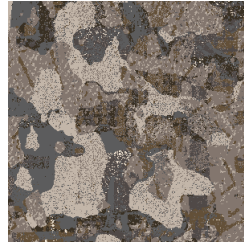
Against The Tide



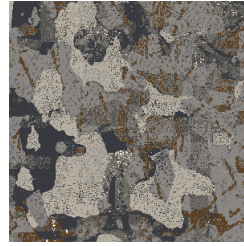
380
SEAGRASS



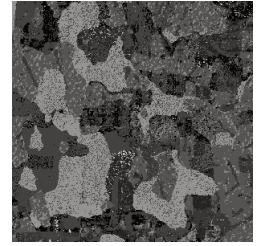
530
CORAL



550
REEF



750
OCEAN



780
SEABED

Specifications and colourations are subject to manufacturing tolerances. As part of the GH Commercial continuous improvement program, GH Commercial reserves the right to change the specifications of or delete colours of this product without notice. While all care is taken, product images may vary in colour due to possible printing process variations. Images do not seek to duplicate the exact visual appearance, but serve merely as a guide or point of reference.

All GH Commercial carpet tiles and planks must be installed in accordance with AS2455 Parts 1 & 2 (latest version) and the GH Commercial Carpet Tile/Plank Installation Instructions.

Chair pads are recommended under office chairs with roller castors to preserve appearance retention, act as a deterrent toward delamination and to prevent premature or accelerated wear. Walk-off tiles from the Tuff Stuff II Collection are recommended at entryways to reduce soiling.

~Test results and certificates are available on request.

*Warranty is in addition to any rights consumers may have under Australian consumer laws. Terms and conditions apply - for full information in respect to the scope of the warranty please contact your GH Commercial Account Manager or our Head Office.